

**National Top Officials Exercise (TOPOFF-4)
Showcases Public Health**



Presented by TOPOFF Oregon Venue's:

- Designer/Controller **James D. Spitzer**
MBA, MS, Captain, U.S.C.G (retired); Health Emergency Manager
- Health Incident Commander **David B. Houghton**
RN, MPH; Director, County Emergency Management
- Agency Executive and Health Officer **Gary Oxman**
MD, MPH; Health Officer

Start with ~40 minute presentation of:

Introduction

1. Health Department Overview
2. Health Department Approach to Incident Management

TOPOFF is Coming to Town

1. A year of planning and relationship building

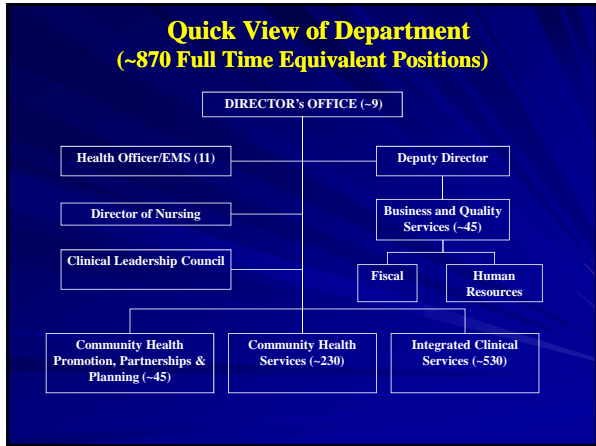
The TOPOFF Experience

1. Oregon Scenario
2. Response Operations
3. Lessons Learned
 - What Worked
 - What Didn't Work

Then dialog, elaboration for ~ 50 minutes

TOPOFF Veterans Poll:

Year	Incident Location(s)	Hazard	Veterans Present?
2000	Denver	Plague	
2003	Seattle Chicago	RDD Plague	
2005	NJ CT	Plague Explosive	



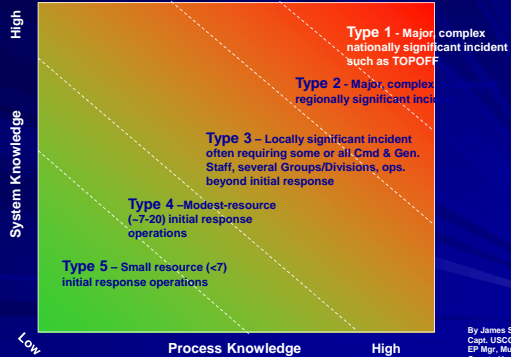




Milestones of Department's increasing capacity to manage emergencies

1. Emergency preparedness sanctioned as strategic priority since 2003
2. 90 person Incident Management Team is focal point for training and experience
3. IMT members specialize in various ICS functions
4. Comprehensive PH response plans, transparent to all via the web
5. Striving to increase IMT member's ICS competency
6. History of participating in major, complex exercises

Progressive levels of response organization's ICS knowledge relative to incident type (size, complexity)



TOPOFF Comes to Town

1. What we knew up front: scenario/demands were more intense, longer, complex than our experience
2. Serious challenges
 - Feds... "do better than Seattle TOPOFF"
 - FRMAC... reputation for independent action
 - Local EOCs/ECCs... conflicting traditions re: tactical control or support/coordination
 - Advanced ICS methods... available or not?
 - Lack of clarity re: PH role at blast siteResponse to above: PH forged relationships plans intended to guide TOPOFF organization/operations.







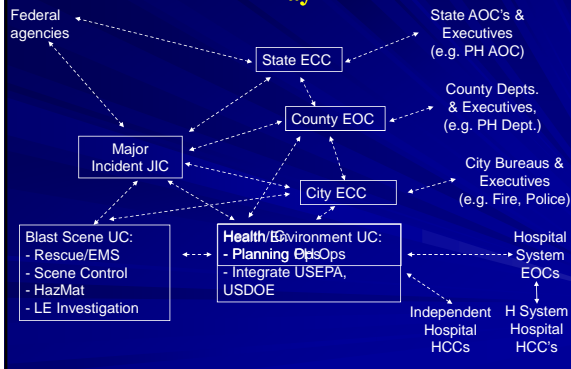
Summary of Response Operations

Evolution of:

- response organization relationships
- blast scene Unified Command
- Public Health/Environmental Unified Command

Public health/medical field operations

Simplified Response Organization Relationships Day 1

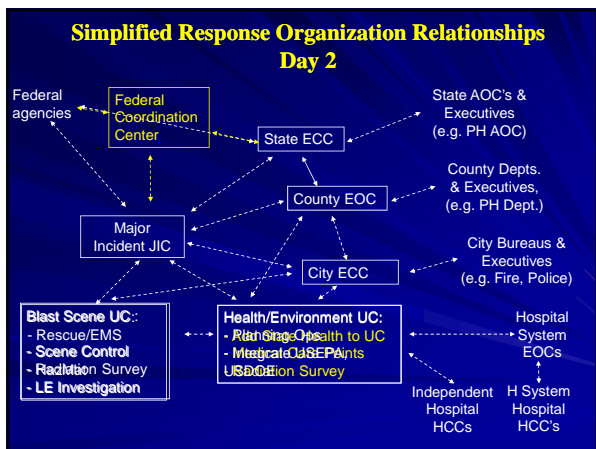


Blast scene recreated in a field. Scene Unified Command included public health ...







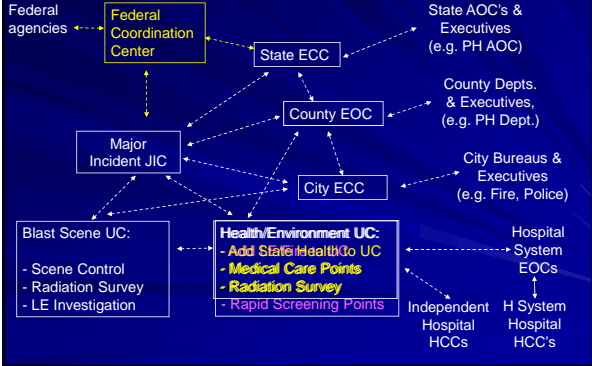


Medical Care Points

- Extended ER capacity
- Staffed by ~150 DMAT, PH, social services, LE, Fire/EMS



Response Organization Relationships Continued Evolution



Health/Environment UC evolved over 3 day period as LHD IC was joined by EPA, DOE, State Health, police, and fire ICs.



Rapid Screening Points

- Disease registry, identify and refer those exposed, reassure those not exposed



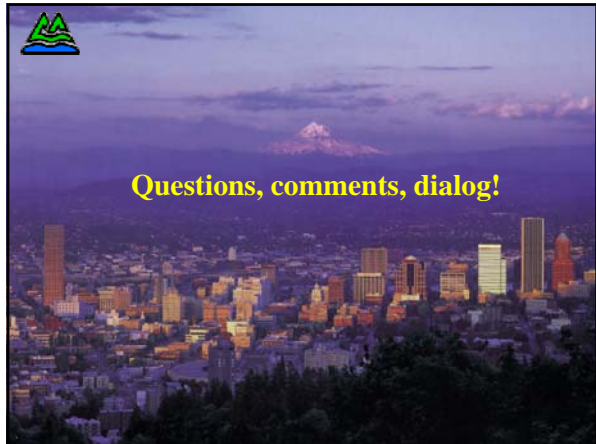
Staffed by ~125 public health, social workers, fire/EMS, LE, FRMAC, EPA, State radiological, Coast Guard, citizen volunteers (students)

Lessons Learned – What Worked

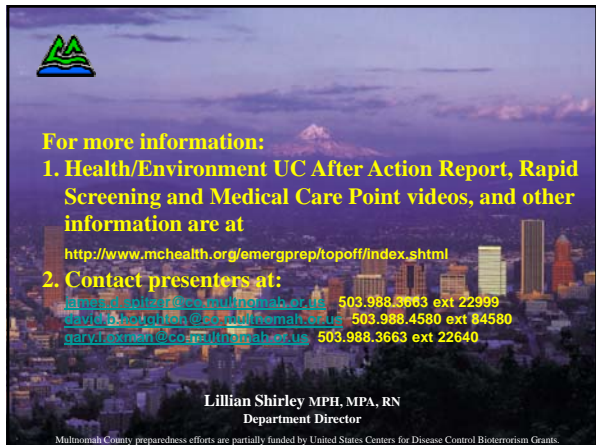
- Tactical Communications
- PH presence at blast scene
- Health/Environmental Unified Command
- Health impact assessment, policy development, message development
- Rapid Screening Points

Lessons Learned – What Didn't Work

- PH integration into blast-scene Unified Command
- PH integration into large JIC/JIS
- Transition of blast-scene Unified Command to Health/Environment Unified Command (H/E UC)
- Integration of (H/E UC) into broader policy making
- ICS process failures, e.g. resource ordering, situation display
- PH did not effectively drive community-level response to radioactive contamination
- Communication with policy makers – PH relied on formal lines of communication vs. effective communication behaviors
- Medical Care Point relationship to a UC



Questions, comments, dialog!



For more information:

1. Health/Environment UC After Action Report, Rapid Screening and Medical Care Point videos, and other information are at

<http://www.mchealth.org/emergprep/topoff/index.shtml>

2. Contact presenters at:

alvin@hawaiihealth.com 503.988.3663 ext 22999
andy@hawaiihealth.com 503.988.4580 ext 84580
gary@hawaiihealth.com 503.988.3663 ext 22640

Lillian Shirley MPH, MPA, RN
Department Director

Multnomah County preparedness efforts are partially funded by United States Centers for Disease Control Bioterrorism Grants.
