

The Postal Plan: Achieving Operational Readiness

Minnesota/Wisconsin
Cities Readiness Initiative

CRI Goal

To provide mass prophylaxis to 100%
of the identified population within 48
hours of the decision to do so.

Minnesota Public Health Preparedness Planning

- Minnesota Department of Health
 - Statute
 - Policies
 - Guidance
- Regional Coordination
 - Coordinate planning, training, templates and tools
- Local Implementation
 - Implement planning, training, response

MN/WI MSA



CRI Mass Prophylaxis Plan

- Mass Dispensing Sites (MDS)
 - Head of Household model
 - State/Regional Coordination
- Alternate Dispensing Modalities (ADM)
 - Restricted Mobility
 - Large Cohorts
- Postal Plan

Postal Plan

- One-time only use of USPS mail carriers to deliver single bottle of antibiotics to residential addresses
- No mail delivery that one day
- Residential addresses – no businesses
- Each carrier paired with a security officer
 - Security for carrier
- Complete operation within 8 – 10 hours

Postal Advantages

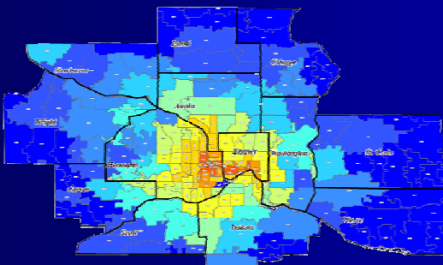
- Efficient delivery method
 - Saves lives
- “Stay home”
 - Decrease opportunity for civil disorder
- Buys time
 - Stand up MDS
 - Distribute to PUSH organizations
 - Disseminate public information messages

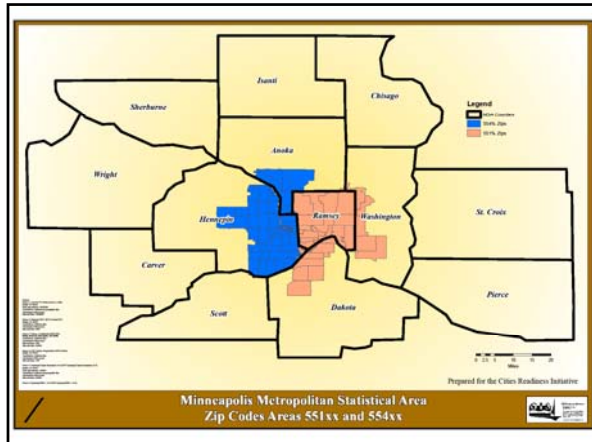
Strategic Security Plan

- Zip Code Selection
- Numerical Security Requirement
 - One security staff for transport from RSS to each Delivery Unit (DU)
 - Two security staff at each DU
 - One security staff to each USPS carrier

Zip Code Selection

- Population Density
- Jurisdictional Boundaries





Security Requirements

- Transportation from RSS to DU = 1 security staff per USPS vehicle
 - 30 delivery units
- Delivery Unit = 2 security staff
 - 30 delivery units x 2 security staff = 60
- Postal routes = 1 security staff
 - 1,727 routes / 2 = 864
- **TOTAL Security Needed= 924**

Law Enforcement Recruitment

<ul style="list-style-type: none"> ■ Early MN State Patrol participation ■ Assess total LE resources by agency ■ Target requests <ul style="list-style-type: none"> - Statewide agencies - Postal jurisdictions 	<ul style="list-style-type: none"> ■ "Sales Call" <ul style="list-style-type: none"> - Provided CRI overview - Identified the problem - Asked for their support ■ Next steps <ul style="list-style-type: none"> - Renew relationships - Secure additional agreements
---	---

Postal Security Resources

- MN State Patrol
- MN Department of Natural Resources
- MN National Guard
- Hennepin County Sheriff
- Ramsey County Sheriff
- Dakota County Sheriff
- Anoka County Sheriff
- Washington County Sheriff
- City of Minneapolis
- City of St. Paul
- Minneapolis Park Police
- Metro Transit Police

Current Challenges

- Pre-EUA Submissions
 - Fact Sheet Requirements
 - Required Label Information
- Non-SNS asset status

Contact Information

Laura Eiklenborg
Deputy Director, Emergency Preparedness
City of Minneapolis
250 South 4th Street, Room 400
Minneapolis, MN 55415
612-673-2103
Laura.eiklenborg@ci.minneapolis.mn.us
