

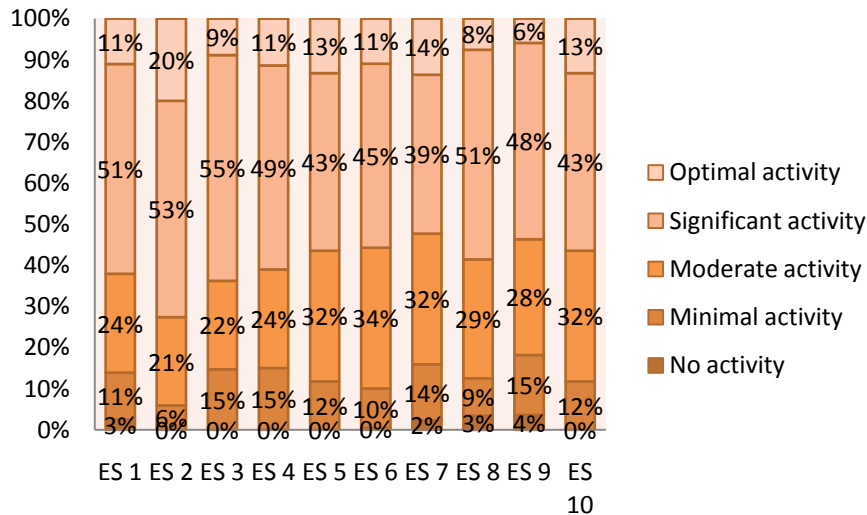
Under the Microscope: Evaluating State Public Health Laboratory Systems, Nebraska

Kristin A. Watkins, MBA • Anthony R. Sambol, MA, SM(NRM), SV(ASCP), CBSP • Joseph M. Acierno, MD, JD •
 Liliana P. Bronner, MHSA • Maureen T. Fitzgerald, MPA
as scholars of the GREAT PLAINS PUBLIC HEALTH LEADERSHIP INSTITUTE

INTRODUCTION & BACKGROUND

This project addressed the evaluation of public health laboratory performance standards and indicators in Nebraska. The benefits of this project are stronger constituent relationships and an increased awareness of important resources and services that benefit the citizens of Nebraska for any public health issue. The project initiated a consensus building process within the Nebraska Public Health Laboratory (NPHL) network. This consensus will allow the NPHL to develop a set of standards that will create a framework for continuous quality improvement in laboratory settings across the state.

RESULTS



TEN ESSENTIAL PUBLIC HEALTH SERVICES

The Essential Services provide a working definition of public health and a guiding framework for the responsibilities of local public health systems.

1. **Monitor** health status to identify and solve community health problems.
2. **Diagnose and investigate** health problems and health hazards in the community.
3. **Inform, educate**, and empower people about health issues.
4. **Mobilize** community partnerships and action to identify and solve health problems.
5. **Develop policies and plans** that support individual and community health efforts.
6. **Enforce** laws and regulations that protect health and ensure safety.
7. **Link** people to needed personal health services and assure the provision of health care when otherwise unavailable.
8. **Assure** competent public and personal health care workforce.
9. **Evaluate** effectiveness, accessibility, and quality of personal and population-based health services.
10. **Research** for new insights and innovative solutions to health problems.

ACKNOWLEDGEMENTS

We would like to thank Tony Sambol and all the staff of the Nebraska Public Health Laboratory, Lea Pounds, CityMatCH, the Center for Biopreparedness Education, Nebraska Department of Health and Human Services, Rural Health Education Network, Mary Balluff, Molly O'Dell, Magda Peck, Brandon Grimm, Vanessa White, the Association of Public Health Laboratories and all survey participants for their support and inspiration.

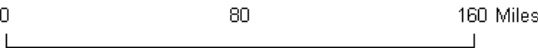
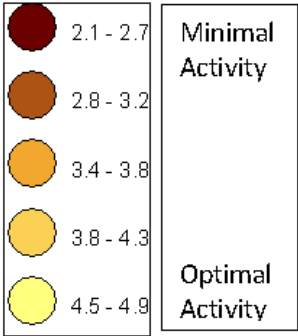
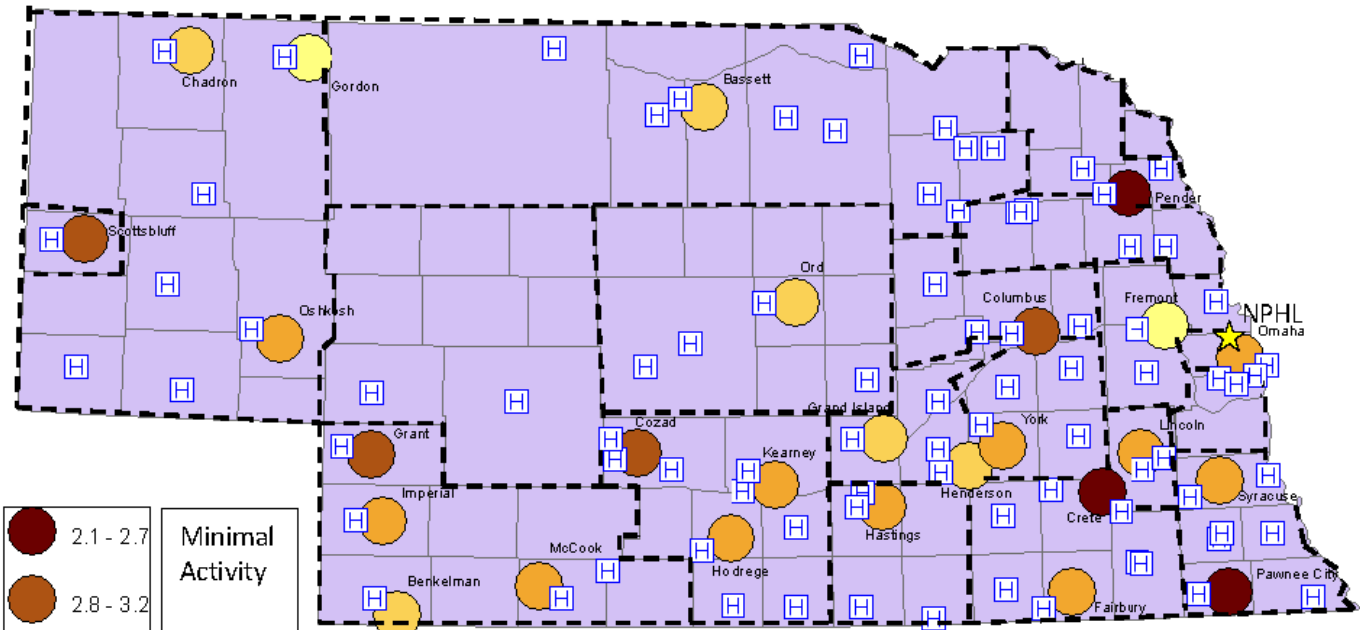
WHY ARE PUBLIC HEALTH LABORATORIES IMPORTANT?



- ✓ Disease prevention control and surveillance
- ✓ Environmental health and protection
- ✓ Emergency response
- ✓ Research
- ✓ Training and education



Nebraska Public Health Laboratory Assessment Results



--- Public Health Districts